



MONTHLY MEMBERSHIP PROGRESS REPORT

District 322 E

Results as of: 06/30/2018

GMT: SWADESH RANJAN SAHA

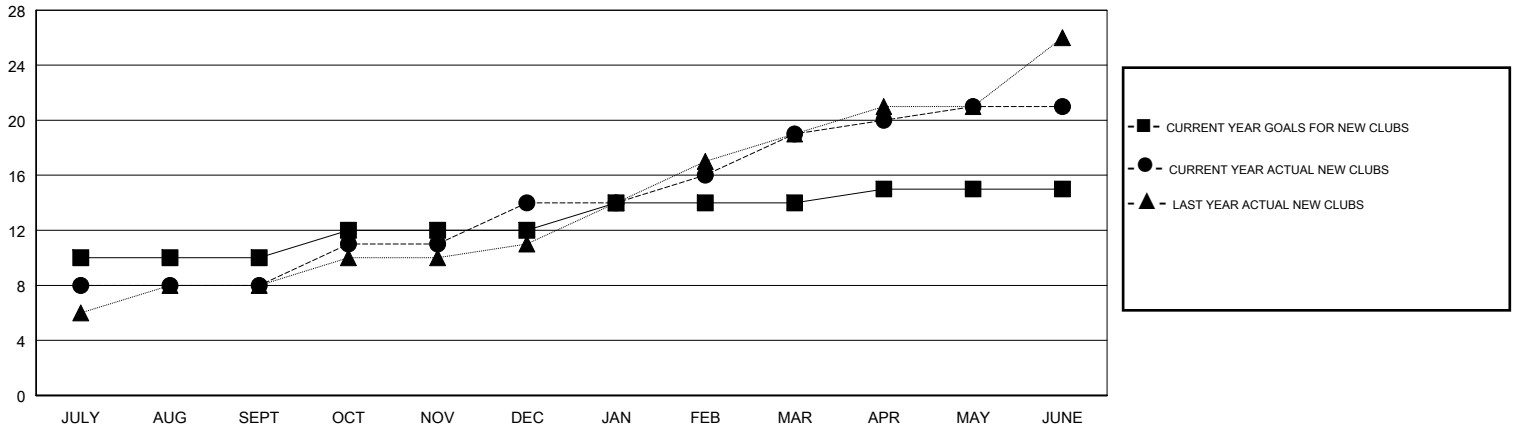
LOCATION INDIA

GMT CA

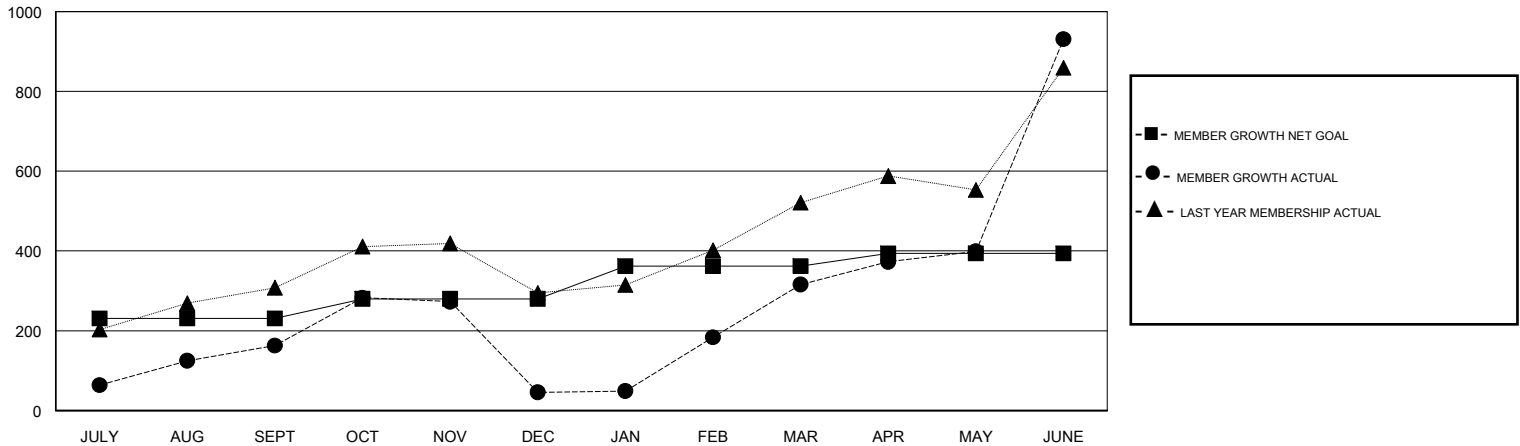
Clubs			
RESULTS FOR 2017-2018			
QUARTER	NEW CLUB GOAL	NEW CLUBS	DROPPED CLUBS
JULY/AUG/SEPT	10	8	1
OCT/NOV/DEC	2	6	11
JAN/FEB/MAR	2	5	0
APR/MAY/JUNE	1	2	8

Members			
RESULTS FOR 2017-2018			
QUARTER	MEMBER GROWTH NET GOAL	MEMBER GROWTH ACTUAL	DROPPED MEMBERS ACTUAL (including transfers)
JULY/AUG/SEPT	231	385	197
OCT/NOV/DEC	49	237	350
JAN/FEB/MAR	82	399	61
APR/MAY/JUNE	32	991	367

GOALS AND ACTUAL NEW CLUBS CUMULATIVE



GOALS AND ACTUAL MEMBERS CUMULATIVE



DROPPED CLUBS: 20	96 CLUBS OF 137 ADDED 1 OR MORE NEW MEMBERS	<u>GENDER DISTRIBUTION</u>	
DROPPED MEMBERS		MALE	3,176 (66.72%)
DECEASED	8	FEMALE	1,584 (33.28%)
CLUB CANCELLED	440	Women Percentage Fiscal Year Goal: 30%	
OTHER	527	TOTAL FAMILY UNIT MEMBERS	0
TOTAL	975	FAMILY MEMBERS PAYING HALF DUES	0

[CLICK HERE FOR CUMULATIVE MEMBERSHIP DATA](#)